

HOME GARDEN TRAVEL AND LIFESTYLE MAGAZINE

# PORTRAIT<sup>TM</sup> OF SEATTLE

SEATTLE'S  
HOT  
WATERFRONT  
MARKET

PortraitMagazine.com



DISPLAY UNTIL 12/05/17

\$5.95 US

BRUNNER ARCHITECTS'  
HUNTS POINT BEAUTY

Architect Steve Hoedemaker  
DESIGNS A LEGACY ISLAND HOME

WEEKEND TRAVEL  
WOODINVILLE WINE COUNTRY



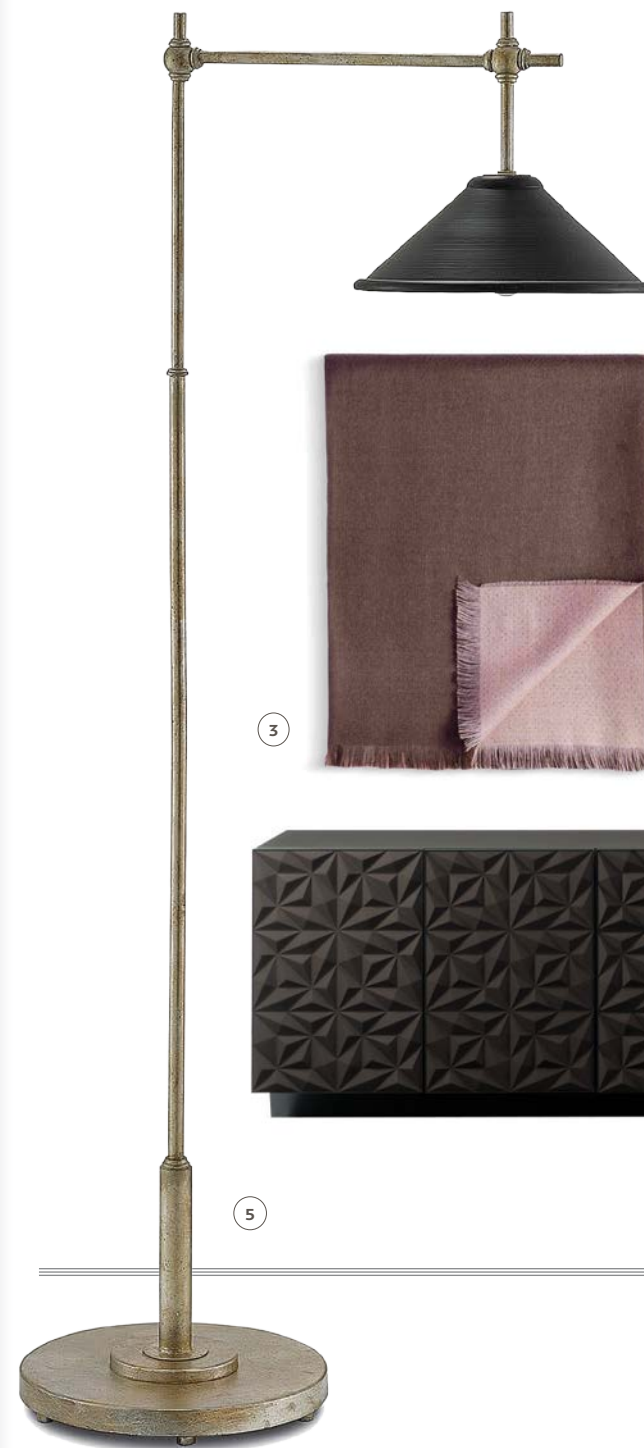
# EYE ON DESIGN

Modular, boxy, yet just as cozy, the Rubix series from Camerich uniquely features inlaid piping available in multiple color choices. Varied modular components, including attachable sofa arms allow for unrivaled flexibility. Paired with Plush, whimsical, and inviting, the Honey Chair is an eye-catcher in any space. Hut's table top is available in Carrara Marble, Mystique Brown Marble, Brown Walnut Veneer, or Black Walnut Veneer. Bottom structure, which conveniently doubles up as a book/magazine holder, Available at Alchemy Collections, [www.alchemycollections.com](http://www.alchemycollections.com)





Bring an artsy vibe and keep your small space feeling light and bright with this contemporary, Caracole Modern Floater Cocktail Table made with an artisan, cast glass top and chic, brushed chrome base. Snuggle two together in front of the sofa for a swank cocktail table that visually does not appear to take up too much space. Available through Greenbaum Home Furnishings. [www.greenbaumfurnishings.com](http://www.greenbaumfurnishings.com)



Sleek and balanced Van Ness Chaise from Allan Knight. Available through Terris Draheim. [www.terrisdraheim.com](http://www.terrisdraheim.com)



1) Designed by Thierry Picassette, the Rosace Sideboard from Roche Bobois features a 3D facade in thermo-formed foam. Available from [www.roche-bobois.com](http://www.roche-bobois.com) 3) A lovely pairing, mauve and taupe accent L'Objet's Double Face Throw. From Hedge & Vine [www.hedge-andvine.com](http://www.hedge-andvine.com) 4) Add a graphic moment with the Soria pillow in rose and Urban jungle in night, both from Elitis. Available at [www.williamandwayne.com](http://www.williamandwayne.com) 5) Architectural and Asian-inspired, the Dao Floor Lamp has an inner finish of Silver Granello, perfect for reading. [www.curreycodealers.com](http://www.curreycodealers.com)



Composed of 100% linen, the textural, knotted and fringed mirror from Elitis. [www.williamandwayne.com](http://www.williamandwayne.com)



STYLE STARTS HERE



*J. Garner Home*

Seattle Design Center  
206.762.0597

[www.jgarnerhome.com](http://www.jgarnerhome.com)

follow us on [f](#) [t](#) [p](#) [i](#)



**hedge&vine**

10028 Main Street, Bellevue | 425.451.7872

PURVEYORS of FINE WINE, SPECIALTY FOODS  
and LOVELY HOME GOODS



BOOKSHELF | Inspired House



**The Art of Elegance:  
Classic Interiors**

by Marshall Watson  
(Rizzoli) [www.powells.com](http://www.powells.com)

Marshall Watson's first book reveals how to make traditional interiors fresh. Known for his meticulously researched, European-inspired style, Marshall Watson creates interiors that are rich in texture, detail, and simple luxuries. In his first book, Watson shares his finest work, demonstrating that while each of these homes is as unique as its owner, they all adhere to principles that transform a mere series of spaces into a genuine, coherent home: warmth, light, balance, livability. Beautifully photographed with lavish images of Watson's work.

**Creating Home: Design  
for Living**

by Keith Summerour  
(Rizzoli) [www.powells.com](http://www.powells.com)

From acclaimed architect and designer Keith Summerour comes an alluring new book of carefully crafted dwellings that redefine the idea of home for today. In this alluring new book, Keith Summerour shares nine houses, exploring their architecture, interiors, and grounds, to illustrate a new idea of home. Re-interpreting and making new his

own Southern legacy that speaks both of aristocratic charm and homespun appeal, these homes range from rustic retreats that draw their power from the land to elegant manor houses, but all share extraordinary character and charm that nod to history while reflecting the way people wish to live in the world today.

**The New Chic: French Style  
From Today's Leading  
Interior Designers**

by Marie Kalt  
(Rizzoli) [www.powells.com](http://www.powells.com)

The next generation of Parisian interior designers curated by the editors of French *Architectural Digest*. From Vincent Darré and Joseph Dirand to India Mahdavi, a new wave of design talent has emerged in Paris. Combining nonchalant elegance with the French capital's perennial chic flair, their interiors reflect a refreshingly innovative take on home decor while inspiring myriad designers across the globe. Renowned for publishing the very best of interior design, the editors of French *Architectural Digest* have thoughtfully curated a collection of interiors by twelve of the new guard's top names.

*design* | MODERN DAY

Designed by Sacha Lakic for Roche Bobois, the Cenario Corner Composition Sofa offers European styling and endless flexibility of configuration. Upholstered in SOAVE leather, corrected, embossed grain, pigmented finish. Contrasting stitching. Double depth backs with reclining mechanism, mechanical armrest with lateral partition. Available at [www.roche-bobois.com](http://www.roche-bobois.com)





The perfect mix of elements from Four Hands. Warm woods and cool concrete to rugged iron and sumptuous upholstery. Modern industrial design takes an ultra-comfortable turn in the Aidan Queen Bed and Warby Bench. Available through J Garner Home [www.jgarnerhome.com](http://www.jgarnerhome.com)



1

1) Geoffrey Chandelier from Arteriors, with rusted chain and gray wood ring makes an impressive statement when hanging from a beam in a great room or above a round dining table. The Edison bulbs reinforce the rustic, industrial feel. From Henredon and Schoener, [www.henredonschoener.com](http://www.henredonschoener.com) 2) Earthy Mazama Wares, the Crater Lake Mug in Carbon. From [www.shopmazama.com](http://www.shopmazama.com) 3) Four Hands Weaver Coffee Table. Available at [www.jgarnerhome.com](http://www.jgarnerhome.com) 4) Antique Brass and Arteriors Hartley Mirror. From [www.henredonschoener.com](http://www.henredonschoener.com) 5) Anchor your living room in chic style with the Laxamana Quilted Sofa from Bright Chair. At William and Wayne [www.williamandwayne.com](http://www.williamandwayne.com)



3



4

Four Hands Zeno lounge chair in distressed black leather [www.jgarnerhome.com](http://www.jgarnerhome.com)



2



5



Papago Knit Throw in extrafine merino wool is knit into a textured pattern inspired by the designs of the Tohono O'odham tribe, also known as the Papago, of Southern Arizona's Sonoran Desert. [www.pendleton-usa.com](http://www.pendleton-usa.com)





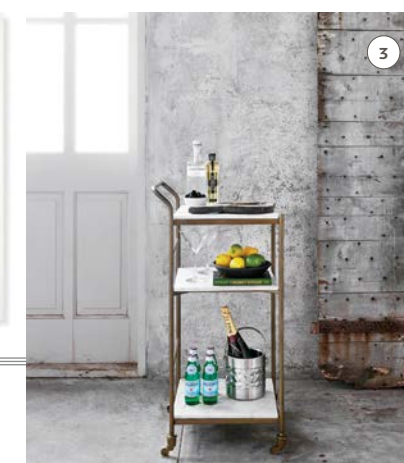
Room and Board's timeless Portica table features a stainless steel base crafted in Wisconsin. Lasers precisely cut the lengths of stainless steel, then artisans hand-weld and hand-sand the mitered corners to create a smooth finish with a subtle, brushed grain pattern. Paired with the Marie leather chairs and Mattea wool rug. All from [www.roomandboard.com](http://www.roomandboard.com)



Callisto Vase, handmade in luminous colors in the New York studio of Tony Wurman. [www.roomandboard.com](http://www.roomandboard.com)



Ayomi Yoshida, After Storm, 2016, Limited Edition Woodblock Print. [www.roomandboard.com](http://www.roomandboard.com)



1) Exclusive to Room & Board oversized silk-screen Luggage Tags are hand-printed in California, 32"x40". Framed in solid wood. [www.roomandboard.com](http://www.roomandboard.com) 2+3) Antique Brass and marble Felix bar Cart. Rockwell Cabinet inspired by vintage machine shop cabinetry. Available through [www.jgarnerhome.com](http://www.jgarnerhome.com) 4) A tall and sleek task light, Currey & Co. Overture Wall Lamp/Nickel Wall Sconce is a contemporary design in polished nickel. At [www.curreycodealers.com](http://www.curreycodealers.com) 5) Designed by Douglas Levine, Bright Chair Company DB Daybed. [www.williamandwayne.com](http://www.williamandwayne.com)





Set an alluring scene with Cynthia Rowley's Long Board Dining Table. Strong lines give a modern edge to its clean-lined form. Shown paired with Klismos scooped wood and upholstered chairs. All from Greenbaum Home Furnishings. [www.greenbaumfurnishings.com](http://www.greenbaumfurnishings.com)



  
**FINE**  
FURNITURE DESIGN  
INTRODUCING  
**DÉCO**

# FURNISHING THE NORTHWEST

SINCE 1959



Introducing a brand new lifestyle collection from French Designer and Architect Patrick Aubriot. Items for the bedroom, dining room, living room & more.  
**Now exclusively available in our showroom!**



FURNITURE • ACCESSORIES • FLOORING • RUGS • CUSTOM WINDOW TREATMENTS

COMPLIMENTARY IN-STORE DESIGN ASSISTANCE • SPECIAL FINANCING AVAILABLE. (O.A.C.)



**Greenbaum**  
HOME FURNISHINGS

...different by design<sup>SM</sup>

929 118TH AVE S.E. Bellevue (Exit 12 off 405) • (425) 454-2474 • [www.differentbydesign.com](http://www.differentbydesign.com)





Moro Media Cabinet in Maple with charcoal stain. Crafted in Vermont for Room and Board. [www.roomandboard.com](http://www.roomandboard.com)



1) Handmade exclusively for Room & Board in the New York studio of KleinReid, the Cloak pendant features a porcelain shade with walnut and aged-brass details and braided cord. From [www.roomandboard.com](http://www.roomandboard.com) 2) Lee Jofa's fall inspired palette, (clockwise) Bute Russet, Halcyon Stripe Chocolate, London Check Ginger, Opera Plain Navy. Through [www.leejofa.com](http://www.leejofa.com) 3) Horizon Throw with the beautiful characteristics of South American alpaca wool, terra cotta. From [www.roomandboard.com](http://www.roomandboard.com) 4) Hess Leather Sofa [www.roomandboard.com](http://www.roomandboard.com) 5) The Allende pillow, inspired by geometric patterns found in vintage Latin American weavings. [www.roomandboard.com](http://www.roomandboard.com) 6) Inspired by Mid-century design, the Embassy Leather Chair by GUS Modern. Available through [www.gusmodern.com](http://www.gusmodern.com)



Design Philippe Bouix for Roche Bobois the Littoral II sofa upholstered in Kenzo Takada fabrics for Roche Bobois. Plain LITTORAL fabric, large cushions in fabric with HANAWA pattern. Shown with the Metallica coffee table. All from [www.roke-bobois.com](http://www.roke-bobois.com)



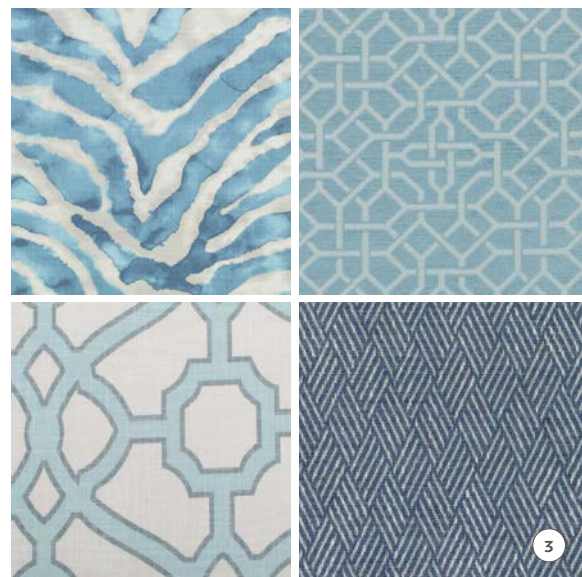


Bring European Country style and elegance into your home with J. Garner Home's exceptional collections. Apartment Sofa in Gloss Navy from LEE Industries. Shown with optional contrasting fabric back bolster and extra throw pillows Available through J. Garner Home, [www.jgarnerhome.com](http://www.jgarnerhome.com)

From the Gien archives, Tulipes Noires. The tulip pattern has often been used in the iconography of the House of Gien. This black version accentuates the bold graphic effect and modernizes this timeless classic. Available at Hedge & Vine. [www.hedgeandvine.com](http://www.hedgeandvine.com)

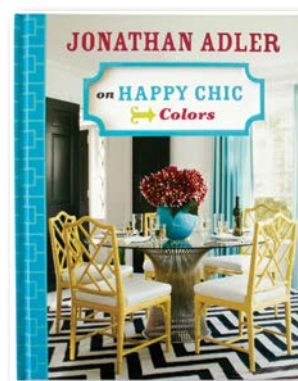
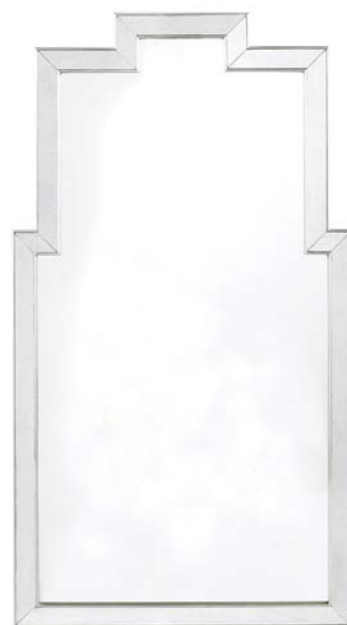






1) Clear glass plates with a slightly scalloped edge detail cascade beautifully down the five-tier Eloise Chandelier from Arteriors. [www.henredonschoener.com](http://www.henredonschoener.com) 2) The Paulette Chair in Columbus Aqua with Washed Linen finish. From Hickory White's Lillian August Collection. Available at [www.henredonschoener.com](http://www.henredonschoener.com) 3) Clockwise: Sahara Prints & Wovens Collection in Agean; Alhambra Prints & Wovens Collection in Aqua marine; Bailey & Griffin Pattaya in Cadet; Wainwright Traditional Collection II in Aqua. From [www.duralee.com](http://www.duralee.com) 4) Jonathan Adler's Newport dinner set with signature hexagon pattern in shades of blue with gold accents. [www.jonathanadler.com](http://www.jonathanadler.com) 5) *Happy Chic Colors*, part style bible, part decorating guide & part self help book. [www.jonathanadler.com](http://www.jonathanadler.com)

(right) A beautiful blend of beveled, lightly antiqued mirrored framing bordered with aged silver wood. Athena Mirror & Roma Etager (below) from Lillian August. [www.henredonschoener.com](http://www.henredonschoener.com)



Duralee®

{FIND YOUR STYLE}

OVER 80,000 SQUARE FEET OF FASHION & HOME DECOR FABRICS

DRAPERY  
UPHOLSTERY  
OIL CLOTH  
APPAREL FABRIC  
TRIMS  
COTTONS  
NOTIONS  
YARNS  
SPECIAL ORDER



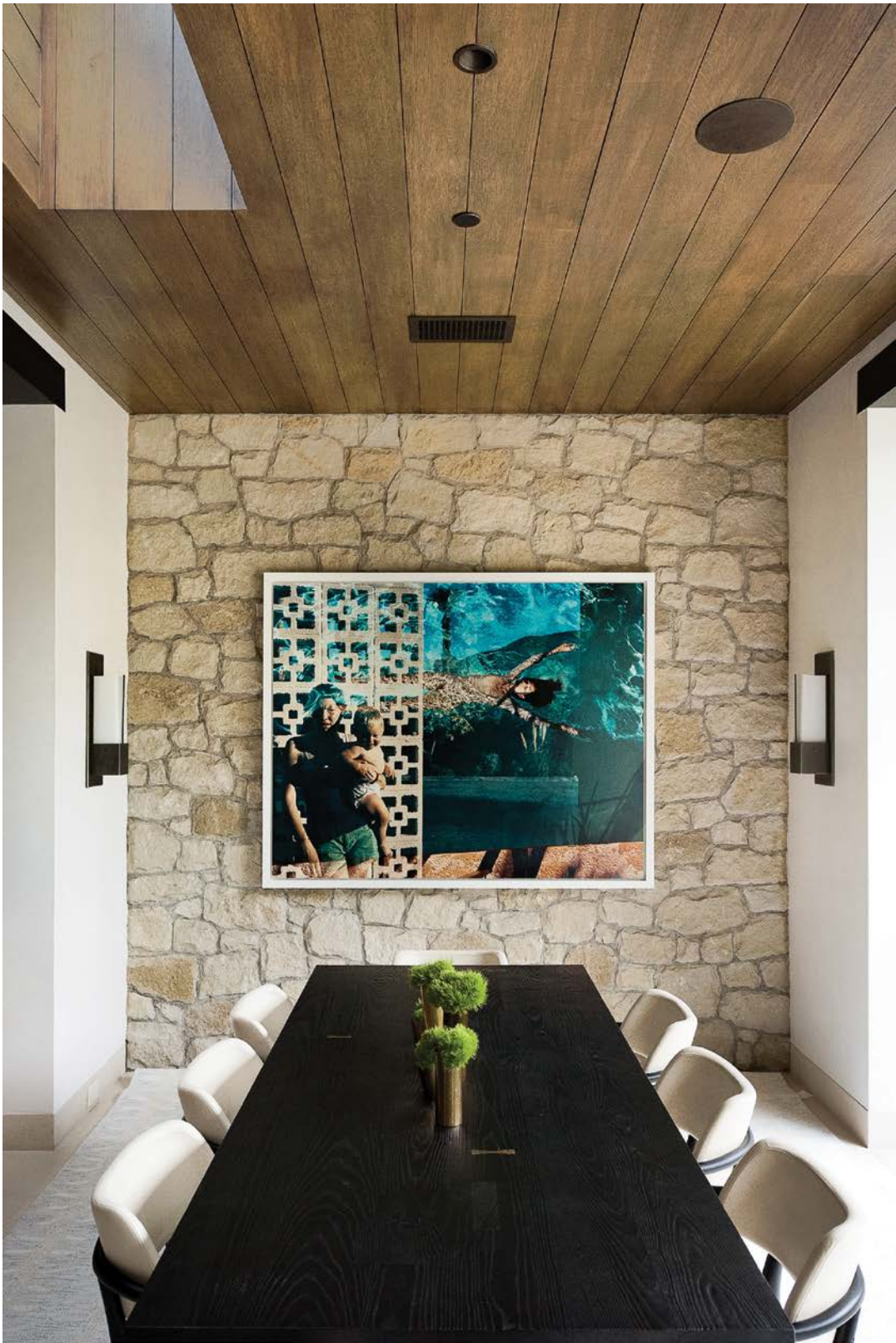
**Mill End Store**  
Family-owned since 1918

PORTLAND 503.786.1234 9701 SE McLoughlin Blvd BEAVERTON 503.646.3000 4955 SW Western Ave  
HOURS Mon-Fri 9:30 -6:00 Sat 9:30 -5:30 Sun 12:00 -5:00 [www.millendstore.com](http://www.millendstore.com)





A contemporary collection, Déco is defined by a balance of sleek lines, curves stretched to the extreme, and angles intentionally softened for a feeling of fluidity. Shown, L'Arc King upholstered bed from Fine Furniture Design. At [www.greenbaumfurnishings.com](http://www.greenbaumfurnishings.com)



FINLEY GRACE / DESIGN

[finleygracedesign.com](http://finleygracedesign.com)  
PDX 503.810.5885 LAX 310.570.2765



The low profile and plush back cushions of the Oasis outdoor sectional are perfect for lounging, while subtle flange seams add a look of casual sophistication. Zippered back pillow covers are easily removed for machine washing (or simply rinse off everything with your garden hose). Whether you use the sectional pieces together or on their own, Oasis is made for modern outdoor comfort. [www.roomandboard.com](http://www.roomandboard.com)



# Cambium

LANDSCAPE ARCHITECTURE  
DESIGN CONSTRUCTION MAINTENANCE



Pacific Northwest living  
Tel 206 860 7625  
[cambiumlandscape.com](http://cambiumlandscape.com)





# Signature Style.



Find your signature style with personalized design services and experience inspirational KOHLER bathroom collections firsthand. Take your project from start to finish with cabinetry, tile, plumbing and designer advice at your nearest KOHLER Signature Store.

## KOHLER® Signature Store by Keller Supply

**Portland Pearl District** 1100 NW Glisan Street, Portland, OR 97209 • (503) 821-7239

**Seattle** 1018 116th Avenue NE, Ste 170, Bellevue, WA 98004 • (425) 654-2407

surface + home

MIDNIGHT • GEOMETRIC • GLINT



**1. LONDON CALLING**  
Samad Connaught rug in blue comprises an eclectic variety of unique transitional designs.. [www.samad.com](http://www.samad.com)

**2. ICE PENDANT**  
Clear glass hand faceted cylinder pendant with one light, designed by Laura Kirar. The solid brass fitting was inspired by a vintage pendant. From Arteriors [www.henredonschoener.com](http://www.henredonschoener.com)

**3. GOLDEN TRIO**  
Beautiful set of three polished brass Olivia trays from Arteriors can dual as a catchall for keys, glassware or vanity top. [www.henredonschoener.com](http://www.henredonschoener.com)

**4. WATER + SOUND**  
Kohler's VibrAcoustic technology brings personalized hydrotherapy to this freestanding Underscore bath, the Bask heated surface warms your back, shoulders, and neck with adjustable temperature settings. [www.KohlerSignatureStoreSeattle.com](http://www.KohlerSignatureStoreSeattle.com)

**5. DEEP END**  
The colors of the ocean, fabric from James Hare Collection:- Constellation: Splash in Sea Spray and Aquila in SeaSpray. From [www.duralee.com](http://www.duralee.com)



DREAM 06  
Colorhouse Paint

WOOL 05  
Colorhouse Paint





Beautifully detailed craftsmanship and abundant storage unite in this traditional space. Soft gray cabinets provide a warm alternative to white, and a contrasting center island accommodates multi-person food prep. Embassy Row Kitchen from WoodMode. Product and design services, available through Henredon & Schoener [www.henredonschoener.com](http://www.henredonschoener.com)



surface + home

JULEP • NEW CLASSIC • RELAXED

Julep SW 6746  
Sherwin Williams



(above right to left)  
Express your creativity with locally handmade tile.  
from Pratt & Larson Tile and Stone  
6x6 Embossed A PW1 w/Portland and  
6x6 Embossed D PW7 w/Indigo  
[www.prattandlarson-or.com](http://www.prattandlarson-or.com)



- 1. COLOR POP**  
Hand loomed Aquinnah flat weave in durable 100% cotton, by Dash & Albert [www.jgarnerhome.com](http://www.jgarnerhome.com)
- 2. FINE WARES**  
Vitrine Pendant's incandescent bulb shines through the flared Clear glass shade, Currey & Co. [www.curreycodealers.com](http://www.curreycodealers.com)
- 3. GOING CLASSIC**  
Inspired by classic marbles, Caesarstone's White Attica features a clean white base with dense, dark grey interwoven veins. [www.caesarstoneus.com](http://www.caesarstoneus.com)
- 4. VERDE COCINA**  
The unequalled BlueStar Gas Wall Oven combines heavy-duty, handcrafted construction. Powerful 25,000 BTU burner within each oven, 15,000 BTU ceramic infrared broiler Patina Green (RAL 6000). [www.bluestarcooking.com](http://www.bluestarcooking.com)
- 6. CAFE CULTURE**  
La Collection Parisienne dining table by designer José Levy. [www.roche-bobois.com](http://www.roche-bobois.com)







What makes SieMatic style collection URBAN so versatile and unique? It is the unconventional, intuitive juxtaposition of carefully selected objects and thematic contrasts: exciting and peaceful, strange and familiar, modest and ostentatious, flea market find and design classic. It is the individual aesthetics that tell a story of the experience, values and contrasts of a unique personality. It is "solitaire" planning in which each object has a relationship with its neighbor. [www.siematic-seattle.com](http://www.siematic-seattle.com)

# surface + home

DOWNTOWN • NEXT • EARTHY



1

**1. COOL DOWN**  
KitchenAid 36" Width Built In Stainless Steel French Door Refrigerator with Platinum Interior Design in Black Stainless. [www.kitchenaid.com](http://www.kitchenaid.com)

**2. TEXTURE PACK**  
Pratt and Larson Tile: (top) Watercolor glazes flow and pool in the firing to create incomparable depth and beauty W76. (below) Scraffito Pattern A 5x10 PW1-India Ink. [www.prattandlarson-or.com](http://www.prattandlarson-or.com)

**3. NEW GENERATION**  
SieMatic kitchen furniture elements that can be flexibly planned and designed, and convey a feeling of individual freedom and mobility, yet offer an abundance of advanced



2

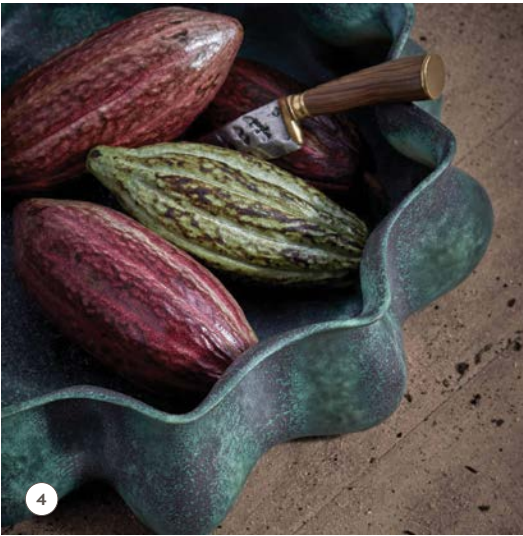


3

functions. You can find them in the SieMatic URBAN style collection. [www.siematic-seattle.com](http://www.siematic-seattle.com)

**4. ON DISPLAY**  
Create a striking display with the Cenote bowl from L'Objet. Reminiscent of Tulum's historic networks of caves and sunken pools, it boasts a fluid outline and a weathered green finish. [www.hedgeandvine.com](http://www.hedgeandvine.com)

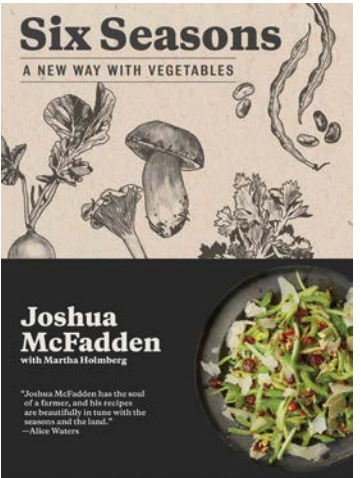
**5. VEGGING OUT**  
The debut cookbook, *Six Seasons* from Joshua McFadden, a chef with the soul of a farmer and the palate of a visionary. [www.powellsbooks.com](http://www.powellsbooks.com)



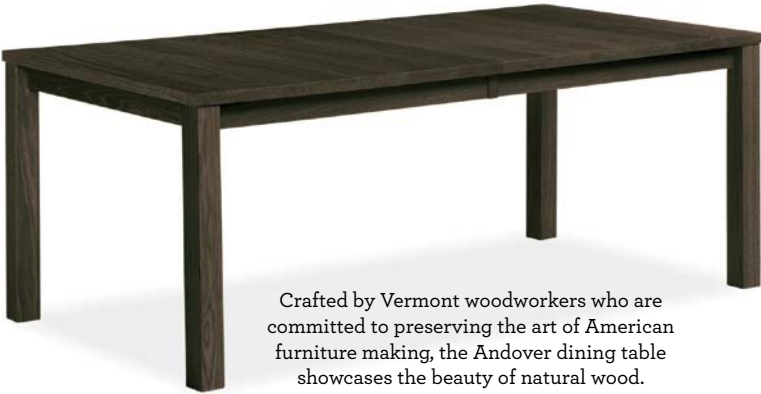
4



Inspired by factories of the early 20th century, the Artesso kitchen collection by Brizo is a warmer, more refined take on the industrial aesthetic. SmartTouch technology. [www.brizo.com](http://www.brizo.com)



5



Crafted by Vermont woodworkers who are committed to preserving the art of American furniture making, the Andover dining table showcases the beauty of natural wood. [www.roomandboard.com](http://www.roomandboard.com)



victoria ⊕ albert®

volcanic limestone baths

Wood·Mode®  
FINE CUSTOM CABINETS



Welcome home. Time to make it your own.



H E N R E D O N & S C H O E N E R

Design. Build. Furnish.

LINCOLN SQUARE 2nd Floor 700 Bellevue Way NE, Bellevue, WA 425.454.9000

[henredonschoener.com](http://henredonschoener.com)





There's just something about soaking in a luxurious tub to melt away all the concerns of the day. Victoria + Albert's Vetralla free standing tub is simple, deep and double-ended - ideal for modern bathrooms where space is at a premium. Available in seven optional external paint finishes, shown in gloss black. Made from a one piece casting of Volcanic Limestone and resin. Best Plumbing [www.showroom.bestplumbing.com](http://www.showroom.bestplumbing.com)