

HOME GARDEN TRAVEL AND LIFESTYLE MAGAZINE

PORTRAIT[®] OF SEATTLE

Architect Designed
Modern Homes
That Maximize Space

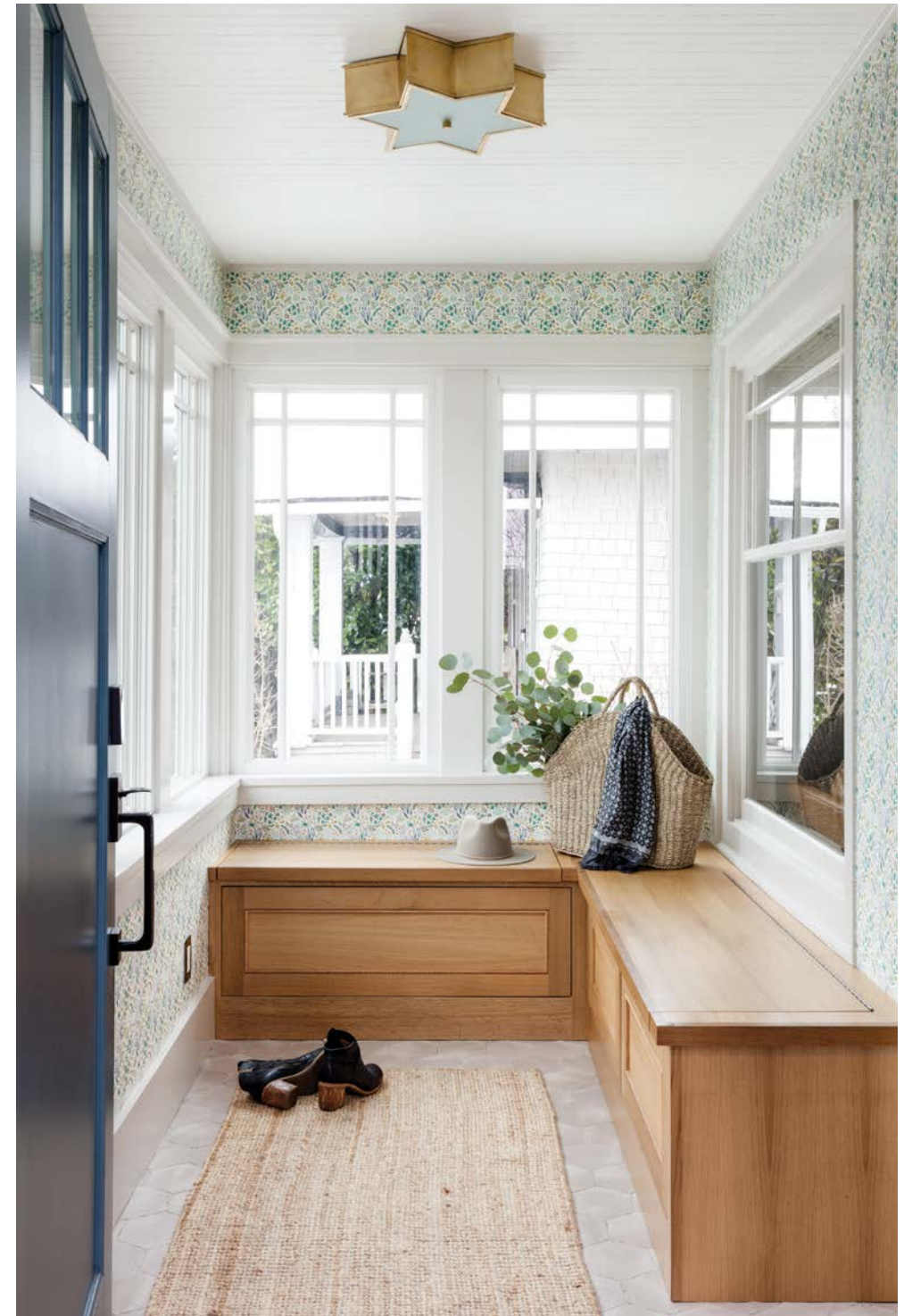
Eco Savvy Architecture
Environmentally Positive Living

PortraitMagazine.com

0 74470 99821 1 52
DISPLAY UNTIL 9/15/2022 \$5.95 US

DESIGN INSPIRATION
COLORFUL SPACES ABOUND
+ LATEST SHOWROOM FINDS

THIS PAGE Custom banquette by Superior Cabinets features Thibaut fabric from The Dixon Group. Benjamin Moore Snowfall White walls with Balboa Mist millwork echo painted upper kitchen cabinets. Bistro style Pottery Barn chairs grace white painted Gat Creek (Designer Furniture Galleries) dining table. The Light Factory fixture provides touch of whimsy. OPPOSITE Cherry Creek Windows & Doors supplied new Marvin windows. House of Harris wallpaper adds cheer to space. Three unique storage cabinets by Superior Cabinets. Visual Comfort star-shaped brass light fixture, reiterated in living room, also from Designer Furniture Galleries at Seattle Design Center.



BUNGALOW GLOW UP

written by DONNA PIZZI *photography by* MIRANDA ESTES

WHEN THE CHARACTERLESS, LAMINATED KITCHEN CABINETRY FROM A 1980S REMODEL OF THIS 1927 CRAFTSMAN BUNGALOW IN SEATTLE'S CHARMING MAPLE LEAF NEIGHBORHOOD BEGAN TO YELLOW AND PEEL, THIS COUPLE, WITH THREE LIVELY CHILDREN AND A DOG, KNEW IT WAS TIME TO UPDATE THE ONE ROOM WHERE EVERYONE LOVES TO CONGREGATE - THE KITCHEN.

The kitchen is grounded by Cement Tile Shop flooring featuring a bold blue star pattern reminiscent of European bistros the couple had visited while abroad. Above, Superior Cabinets custom wood lower cabinets pair with uppers painted in Hidden Cove gray. Between the two, texture sparkles amidst the Clé Tile backsplash with recessed niche. Tucked beneath the Vent-A-Hood, the recessed niche keeps cooking oils off counter. Brass jewel-toned adornments include Fox Mill lighting and Rohl fixtures from Ferguson, the supplier of all Bosch appliances - range, dishwasher, and refrigerator. After informative trips to local slab stores, Erika chose easy-to-clean Cambria quartz countertops.



FOR THE PAST 17 YEARS, Erika Schuyler and her family have enjoyed all the charms of living in their 1927 Craftsman Bungalow in a part of Seattle they love. As their children have grown, however, the home's shortcomings became apparent. In January 2020 Erika says, "We decided to update our home to make it more ours." A friend recommended Amy Vroom of The Residency Bureau in Seattle, who offered multiple options on how to make the space friendlier for a family of five. "The dining area wasn't in the original project," says Amy, "but I felt it would be a missed opportunity if we didn't incorporate it into the design." By removing a partial wall that separated the kitchen from the dining area, she not only made the two areas more functional with better flow, but she also created an entire wall of storage where the dining table was once located. "Previously, you had to walk past an under-utilized bench on one side and the dining table on the other just to get into the kitchen," recalls Amy.

When problems arose with the first contractor, Amy recommended Gary Timpe of BrightWork Builders, LLC, of Seattle, whose over 20 years of experience began by restoring Craftsman homes. "I had to fix a few things," says Gary, "beginning with a week-long demo of the kitchen's subfloor. The prior contractor hadn't fully glued down the concrete board, which would have quickly resulted in cracking tiles."

"A lot of care went into the design," says Erika, who praises Amy's decision to reorganize the spaces. "The new layout is smarter. While cooking, we can be with those in the living and dining room as well." In place of the peeling laminate cupboards are a mix of cabinet finishes with painted above and wood below, grounded by the bold blue star tile that inspired the color palette for the design.

In keeping with the Craftsman style, Amy also upgraded the mudroom, where children's belongings once sat in three chaotic stacks. Beneath the recently added Marvin windows, Amy specified three separate built-in benches, which Gary had to deftly install to be square and plumb in an old house that had settled over the years.

"Amy listened to what we wanted," says Erika, who, in turn, took Amy's advice to procure new furnishings. "It would have been terrible not to make the remodel look as good as it could after all she and Gary had done."

PROJECT SOURCES

CONTRACTOR
BrightWork Builders
brightworkbuilders.com

INTERIOR DESIGN
The Residency Bureau
theresidencybureau.com

WINDOWS
Cherry Creek Windows & Doors
cherrycreekwindows.com

SELECT FABRIC
The Dixon Group
thedixongroup.net

SELECT FURNISHINGS
Seattle Design Center
seattledesigncenter.com

APPLIANCES
Vent-A-Hood
luwaluxury.com